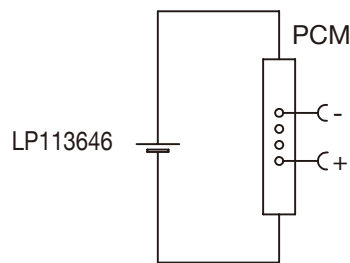


Circuit diagram



Specification

Lithium Polymer Battery Pack LP113646 2200mAh 3.7V with Protection Circuit Module (PCM)
 This data sheet describes the requirements and properties of lithium polymer rechargeable battery pack manufactured by LiPol Battery Co., Ltd - China

Mechanical Characteristics

- Cell ▶ LP113646
- PCM ▶ Yes
- NTC ▶ No
- Configuration ▶ 1S1P
- Weight ▶ appr. 44g
- Connector ▶ JST ACHR-02V-S

Electrical Specification

- Rated Capacity ▶ 2200mAh min, 2200mAh typ.
- Nominal Voltage ▶ 3.7V
- Wat-Hour Rating ▶ 8.14Wh
- Max. Operating Voltage Range ▶ 2.75V to 4.20V
- Max. Charge Voltage ▶ 4.20V ±50mV
- Max. Charge Current ▶ 1100mA
- Standard Charge Current ▶ 550mA
- Max. Discharge Current ▶ 2200mA
- Standard Discharge Current ▶ 1100mA
- Discharge Cut Off ▶ 2.75V
- Internal Impedance ▶ <100mΩ
- Expected Cycle Life @ (0.5C/0.5C) @ 23±5°C ▶ 500 cycles ≥ 80%

Cell Protection

- Overcharge Detection ▶ 4.275 ±50mV (0.7 to 1.3sec. delay, release 4.075V ±50mV)
- Overdischarge Detection ▶ 2.75V ±50mV (14 to 26msec. delay, resume 3.05V ±50mV)
- Overcurrent Detection ▶ 4A to 4.5A (8 to 16msec. delay)

Ambient Conditions

- Charge Temp. Range ▶ +10°C to +45°C
- Discharge Temp. Range ▶ -20°C to +60°C
- Storage Temp. Range ▶ 1 year at -20°C to +30°C >70%
- ▶ 3 months at -20°C to +45°C >70%
- ▶ 1 month at -20°C to +60°C >70%

Environmental and Safety

Please follow LiPol Handling and Safety Precautions for Lithium Polymer Battery. This battery meets the requirements of Battery Directives, and the battery parts are IEC62133-2-2017 & RoHS-Compliant. For more safety precautions and performance standards, please go to www.lipolbattery.com/support.html

Mae in mm	Freimatoleranzen	Date	Name	LiPol Battery	
All dimensions in mm	Generaltoleranzen	Erst. / Orig	29.03.2023		Xie Qingfang
Als Betriebsgeheimnis anvertraut, alle Rechte vorbehalten	up to 6	Gepr./Check	29.03.2023		Guo Daxia
	over 6 up to 30	Benennung/ Designation			Zchng. / Dwg. Nr.
Proprietary data, company confidential, all rights reserved.	over 30 up to 100	LP113646		1	
	over 100	Origin:	FD_4023_10		
			support@lipolbattery.com	www.LiPolBattery.com	