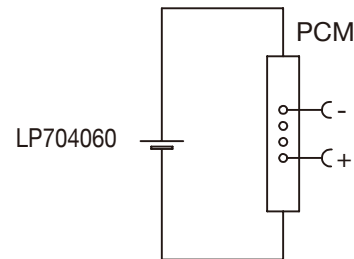


Circuit diagram



Specification

Lithium Polymer Battery Pack LP704060 1800mAh 3.7V with Protection Circuit Module (PCM)
This data sheet describes the requirements and properties of lithium polymer rechargeable battery pack manufactured by LiPol Battery Co., Ltd - China

Mechanical Characteristics

Cell	▶ LP704060
PCM	▶ Yes
NTC	▶ No
Configuration	▶ 1S1P
Weight	▶ appr. 36.0g
Connector	▶ Molex 78172-0002

Electrical Specification

Rated Capacity	▶ 1800mAh min, 1820mAh typ.
Nominal Voltage	▶ 3.7V
Wat-Hour Rating	▶ 6.66Wh
Max. Operating Voltage Range	▶ 2.75V to 4.20V
Max. Charge Voltage	▶ 4.2V ± 50mV
Max. Charge Current	▶ 900mA
Standard Charge Current	▶ 360mA
Max. Continuous Discharge Current	▶ 1800mA
Standard Discharge Current	▶ 900mA
Discharge Cut Off	▶ 2.75V
Internal Impedance	▶ <200mΩ
Expected Cycle Life @ (0.5C/0.5C) @ 23±5°C	▶ 500 cycles ≥ 80%

Cell Protection

Overcharge Detection	▶ 4.275 ±50mV (0.7 to 1.3sec. delay, release 4.275V ±50mV)
Overdischarge Detection	▶ 2.75V ±50mV (14 to 26msec. delay, resume 2.50V ± 50mV)
Overcurrent Detection	▶ 2.0A to 2.5A (8 to 16msec. delay)

Ambient Conditions

Charge Temp. Range	▶ 0 to +45°C
Discharge Temp. Range	▶ -20 to +60°C
Storage Temp. Range	▶ 1 year at -20 to +30°C >70%
	▶ 3 months at -20 to +45°C >70%
	▶ 1 month at -20 to +60°C >70%
Humidity	▶ 65 ±20%RH

Environmental and Safety

Please follow LiPol Handling and Safety Precautions for Lithium Polymer Battery. This battery meets the requirements of Battery Directives, and the battery parts are IEC62133-2-2017 & RoHS-Compliant. For more safety precautions and performance standards, please go to www.lipolbattery.com/support.html

Mae in mm	Freimatoleranzen	Date	Name	LiPol Battery	
All dimensions in mm	Generaltoleranzen	Erst. / Orig	01.06.2018		Xie Qingfang
Als Betriebsgeheimnis anvertraut, alle Rechte vorbehalten	up to 6	· 0,1	Gepr./Check	01.06.2018	Guo Daxia
	over 6 up to 30	· 0,2	Benennung/ Designation		
Proprietary data, company confidential, all rights reserved.	over 30 up to 100	· 0,3	LP704060		Zchng. / Dwg. Nr.
	over 100	· 0,5	Original:		3 FD_9240_10
				support@lipolbattery.com	www.LiPolBattery.com