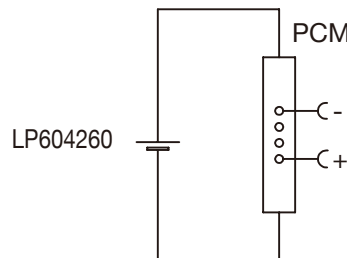


Circuit diagram



Specification

Lithium Polymer Battery Pack LP604260 2000mAh 3.7V with Protection Circuit Module (PCM)
This data sheet describes the requirements and properties of lithium polymer rechargeable battery pack manufactured by LiPol Battery Co., Ltd - China

Mechanical Characteristics

- Cell ▶ LP604260
- PCM ▶ Yes
- NTC ▶ No
- Configuration ▶ 1S1P
- Weight ▶ appr. 40g

Electrical Specification

- Rated Capacity ▶ 2000mAh min, 2020mAh typ.
- Nominal Voltage ▶ 3.7V
- Wat-Hour Rating ▶ 7.4Wh
- Max. Operating Voltage Range ▶ 2.75V to 4.20V
- Max. Charge Voltage ▶ 4.2V ± 50mV
- Max. Continuous Discharge Current ▶ 2000mA
- Discharge Cut Off ▶ 2.75V
- Internal Impedance ▶ <120mΩ
- Expected Cycle Life @ (0.5C/0.5C) @ 23±5°C ▶ 500 cycles ≥ 80%

Cell Protection

- Overcharge Detection ▶ 4.275 ±50mV (0.7 to 1.3sec. delay, release 4.275V ±50mV)
- Overdischarge Detection ▶ 2.30V ±50mV (14 TO 26msec. delay, resume 2.30V ±58mV)
- Overcurrent Detection ▶ 4.0A to 4.5A (8 to 16msec. delay)

Ambient Conditions

- Charge Temp. Range ▶ 0 to +45°C
- Discharge Temp. Range ▶ -20 to +60°C
- Storage Temp. Range ▶ 1 year at -20 to +30°C >70%
- Overcurrent Detection ▶ 3 moths at -20 to +45°C >70%
- Humidity ▶ 1 month at -20 to +60°C >70%
- ▶ 65 ±20%RH

Environmental and Safety

Please follow LiPol Handling and Safety Precautions for Lithium Polymer Battery.
This battery meets the requirements of Battery Directives, and the battery parts are IEC 62133 & RoHS-Compliant.

Mae in mm All dimensions in mm	Freimatoleranzen Generaltolerances	Date		Name	
		Erst. / Orig	26.03.2017	Xie Qingfang	
Als Betriebsgeheimnis anvertraut, alle Rechte vorbehalten	up to 6	0,1	Gepr./Check	26.03.2017	Guo Daxia
	over 6 up to 30	0,2	Benennung/ Designation		
Proprietary data, company confidential, all rights reserved.	over 30 up to 100	0,3	LP604260		3
	over 100	0,5	Origin:		

LiPol Battery

Zchng. / Dwg. Nr.	Index
FD_7210_10	
support@lipolbattery.com	www.LiPolBattery.com