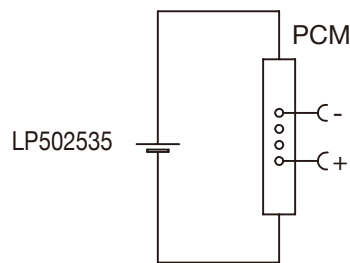


Circuit diagram



Specification

Lithium Polymer Battery Pack LP502535 400mAh 3.7V with Protection Circuit Module (PCM)
 This data sheet describes the requirements and properties of lithium polymer rechargeable battery pack manufactured by LiPol Battery Co., Ltd - China

Mechanical Characteristics

- Cell ▶ LP502535
- PCM ▶ Yes
- NTC ▶ No
- Configuration ▶ 1S1P
- Weight ▶ appr. 8.0g
- Connector ▶ Molex 51021-0200 (B)

Electrical Specification

- Rated Capacity ▶ 400mAh min, 410mAh typ.
- Nominal Voltage ▶ 3.7V
- Wat-Hour Rating ▶ 1.48Wh
- Max. Operating Voltage Range ▶ 2.75V to 4.20V
- Max. Charge Voltage ▶ 4.2V ± 50mV
- Max. Charge Current ▶ 200mA
- Standard Charge Current ▶ 80mA
- Max. Continuous Discharge Current ▶ 400mA
- Standard Discharge Current ▶ 200mA
- Discharge Cut Off ▶ 2.75V
- Internal Impedance ▶ <200mΩ
- Expected Cycle Life @ (0.5C/0.5C) @ 23±5°C ▶ 500 cycles ≥ 80%

Cell Protection

- Overcharge Detection ▶ 4.275 ± 50mV (0.7 to 1.3sec. delay, release 4.275V ± 50mV)
- Overdischarge Detection ▶ 2.75V ± 50mV (14 to 26msec. delay, resume 2.50V ± 50mV)
- Overcurrent Detection ▶ 2.0A to 2.5A (8 to 16msec. delay)

Ambient Conditions

- Charge Temp. Range ▶ 0 to +45°C
- Discharge Temp. Range ▶ -20 to +60°C
- Storage Temp. Range ▶ 1 year at -20 to +30°C >70%
- ▶ 3 months at -20 to +45°C >70%
- ▶ 1 month at -20 to +60°C >70%
- Humidity ▶ 65 ± 20%RH

Environmental and Safety

Please follow LiPol Handling and Safety Precautions for Lithium Polymer Battery.
 This battery meets the requirements of Battery Directives, and the battery parts are IEC62133-2-2017 & RoHS-Compliant. For more safety precautions and performance standards, please go to www.lipolbattery.com/support.html

Mae in mm	Freimatoleranzen	Date	Name	LiPol Battery	
All dimensions in mm	Generaltoleranzen	Erst. / Orig	01.06.2021		Xie Qingfang
Als Betriebsgeheimnis anvertraut, alle Rechte vorbehalten	up to 6 : 0,1 over 6 up to 30 : 0,2	Gepr./Check	01.06.2021		Guo Daxia
Proprietary data, company confidential, all rights reserved.	over 30 up to 100 : 0,3 over 100 : 0,5	Benennung/ Designation		Zchng. / Dwg. Nr.	
		LP502535			3 FD_8241_10
		Original:	support@lipolbattery.com		
			www.LiPolBattery.com		