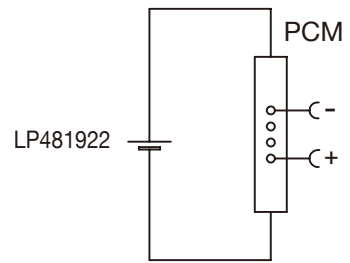


Circuit Diagram



# Specification

Lithium Polymer Battery Pack LP481922 135mAh 3.7V with Protection Circuit Module (PCM)  
 This data sheet describes the requirements and properties of lithium polymer rechargeable battery pack manufactured by LiPol Battery Co., Ltd - China

## Mechanical Characteristics

- Cell ▶ LP481922
- PCM ▶ Yes
- NTC ▶ No
- Configuration ▶ 1S1P
- Weight ▶ appr. 2.7g

## Electrical Specification

- Rated Capacity ▶ 135mAh min, 138mAh typ.
- Nominal Voltage ▶ 3.7V
- Wat-Hour Rating ▶ 0.5Wh
- Max. Operating Voltage Range ▶ 2.75V to 4.20V
- Max. Charge Voltage ▶ 4.2V ±50mV
- Max. Charge Current ▶ 67.5mA
- Standard Charge Current ▶ 27mA
- Max. Discharge Current ▶ 135mA
- Standard Discharge Current ▶ 67.5mA
- Discharge Cut Off ▶ 2.75V
- Internal Impedance ▶ <200mΩ
- Expected Cycle Life @ (0.5C/0.5C) @ 23±5°C ▶ 500 cycles ≥ 80%

## Cell Protection

- Overcharge Detection ▶ 4.275 ±50mV (0.7 to 1.3sec. delay, release 4.275V ±50mV)
- Overdischarge Detection ▶ 2.75V ±50mV (14 to 26msec. delay, resume 2.50V ±50mV)
- Overcurrent Detection ▶ 2A to 2.5A (8 to 16msec. delay)

## Ambient Conditions

- Charge Temp. Range ▶ 10 to +45°C
- Discharge Temp. Range ▶ -20 to +60°C
- Storage Temp. Range ▶ 1 year at -20 to +30°C >70%
- ▶ 3 months at -20 to +45°C >70%
- ▶ 1 month at -20 to +60°C >70%
- ▶ 65 ±20%RH

## Humidity

## Environmental and Safety

Please follow LiPol Handling and Safety Precautions for Lithium Polymer Battery. This battery meets the requirements of Battery Directives, and the battery parts are IEC 62133 & RoHS-Compliant. For more safety precautions and performance standards, please go to [www.lipolbattery.com/support.html](http://www.lipolbattery.com/support.html)

Mae in mm	Freimatoleranzen	Date	Name	<b>LiPol Battery</b>	
All dimensions in mm	Generaltolerances	Erst. / Orig	18.03.2021		Xie Qingfang
Als Betriebsgeheimnis anvertraut, alle Rechte vorbehalten	up to 6	· 0,1	Gepr./check	18.03.2021	Guo Daxia
	over 6	· 0,2	Benennung/ Designation		Zchnng. / Dwg. Nr.
Proprietary data, company confidential, all rights reserved.	up to 30	· 0,2	LP481922		1
	over 30	· 0,3	Origin:		FD_7136_10
	up to 100	· 0,5	support@lipolbattery.com		Index
	over 100	· 0,5	www.LiPolBattery.com		